



## 10 Marchant Court, Downham Market

a modern and spacious 2-bedroom duplex apartment offering an inviting and comfortable living space

Call us today 01223 664 200



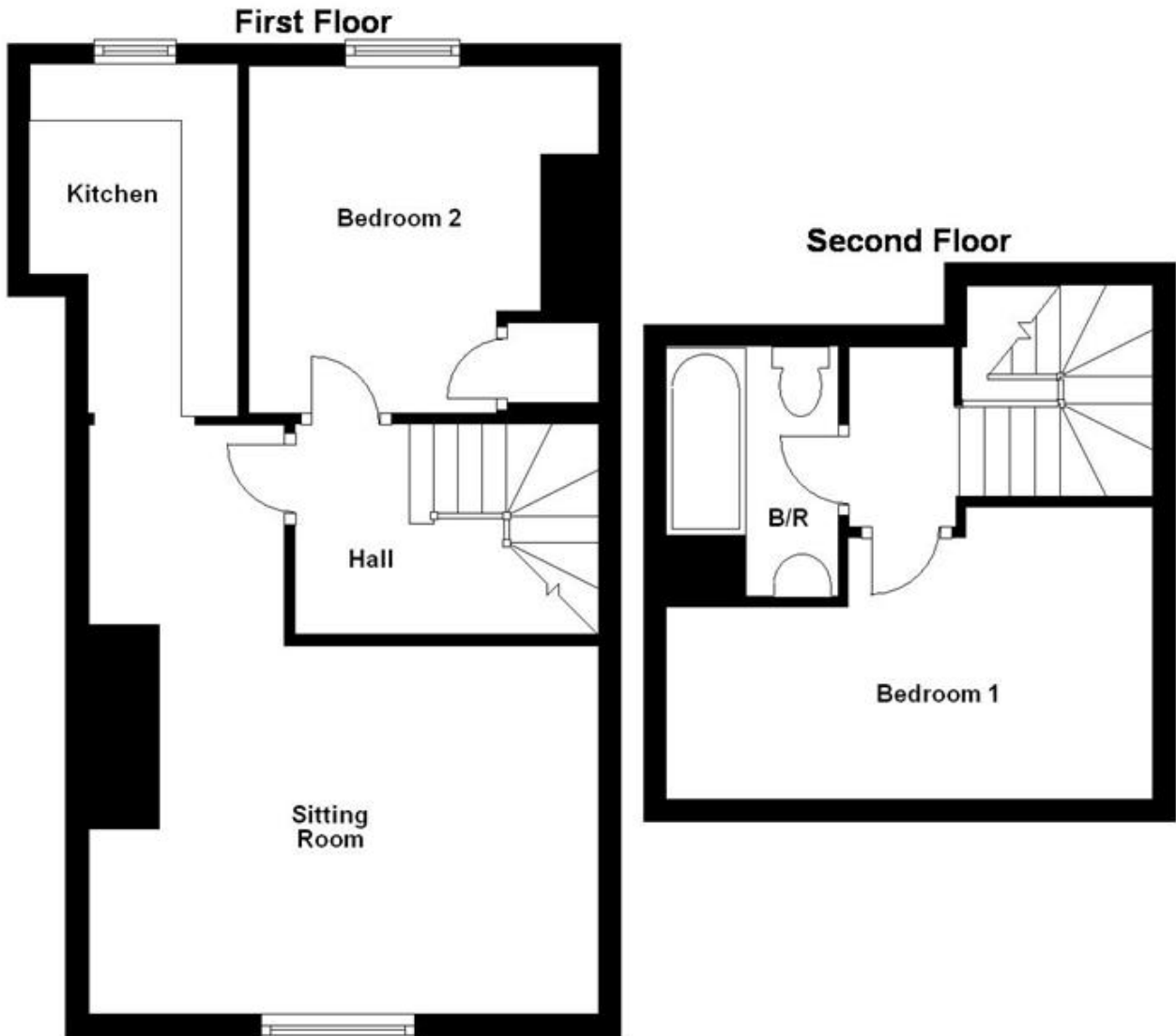
The thoughtful layout is perfect for those who appreciate extra space, with both bedrooms offering plenty of room and contemporary fixtures throughout. Please note, there is a water contribution charge starting from £35pcm, covering water usage.

Nestled in a tranquil yet well-connected location, Marchant Court is just a short walk from the shops and amenities of Downham Market, including supermarkets, cafes, and restaurants. For outdoor enthusiasts, nearby green spaces provide a peaceful retreat. Commuters will enjoy the convenience of Downham Market Railway Station, offering direct routes to Cambridge and London, making this an excellent option for those needing easy access to the city.

With its prime location, stylish design, and practical water contribution charge, 3 Marchant Court is the perfect blend of comfort and convenience. Book your viewing today and see for yourself what this fantastic duplex apartment has to offer!

<b>Rental Price</b>	£925 pcm
<b>Deposit</b>	£1,060
<b>Location</b>	Downham Market
<b>Bedrooms</b>	2
<b>Available From</b>	Now
<b>Property Type</b>	House
<b>Furnished</b>	
<b>Partner Property</b>	No

**Flat 2 Marchant Close, High Street  
Downham Market, Norfolk**



<b>Sitting Room</b>	<b>4.49m x 3.23m (14'9 x 10'7)</b>
<b>Kitchen</b>	<b>3.05m x 1.81m (10' x 5'11)</b>
<b>Bedroom 1</b>	<b>4.49m x 2.58m (11'5 x 8'6)</b>
<b>Bedroom 2</b>	<b>3.09m x 2.61m (10'2 x 8'7)</b>
<b>Bathroom</b>	<b>2.19m x 1.49m (7'2 x 4'11)</b>

Call us today 01223 664 200

<https://www.openarch.co.uk/residential/search/downham-market/10-marchant-court-downham-market-33784395>