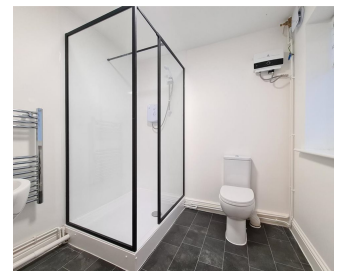




## Flat 14, Whitehall, Coppingford Road, Sawtry, Huntingdon

Welcome to Flat 14, Whitehall, a charming property nestled in the serene countryside of Sawtry, Huntingdon

Call us today 01223 664 200



Upon entering, you are greeted by a cosy reception room, perfect for unwinding after a long day, completed with a spacious kitchen fitted with white goods. The flat features one bedroom, offering a peaceful retreat for restful nights. The bathroom is elegantly designed, providing a touch of luxury to your daily routine.

Conveniently located just 13 minutes away from Huntingdon rail station and 19 minutes from Peterborough, this property offers easy access to nearby amenities and transportation links. Whether you're commuting to work or exploring the picturesque surroundings, this location is ideal for both convenience and tranquillity.

The flat comes with 1 parking space within the property grounds.

Don't miss the opportunity to make this charming flat your new home. Embrace the beauty of countryside living with a touch of modern elegance. Contact us today to arrange a viewing and experience the allure of Flat 14, Whitehall.

Please note that the utility costs are excluded from the rent. However, Wi-Fi is already installed

and is available for a small extra cost of £35 PCM. Water is paid by way of a monthly contribution towards the bulk supply via the Landlord starting from £35 PCM. Electric is on a sub-meter and charged based on usage.

<b>Rental Price</b>	£850 pcm
<b>Deposit</b>	£980
<b>Location</b>	Huntingdon
<b>Bedrooms</b>	1
<b>Available From</b>	Now
<b>Property Type</b>	Flat
<b>Furnished</b>	Unfurnished
<b>Partner Property</b>	No

**Call us today 01223 664 200**

<https://www.openarch.co.uk/residential/search/huntingdon/flat-14-whitehall-coppingford-road-sawtry-huntingdon-32900309>