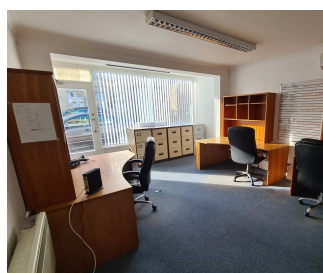


30a High street Over

464sqft, Big display window,

Call us today 01223 664 200



The property comprises of ground floor retail space. Internally, the ground floor provides an open plan retail space. The ground floor benefits from a WC and kitchenette. floor space of 464 sqft, set in the centre of the high street in Over. Property can operate under Class E

Rental Price	£8,500 per annum
Location	Over
Available From	Now
Property Type	Retail Unit
Parking	allocated space
Floorspace	464 sq ft
Partner Property	No

Call us today 01223 664 200

<https://www.openarch.co.uk/commercial/search/over/30a-high-street-over>